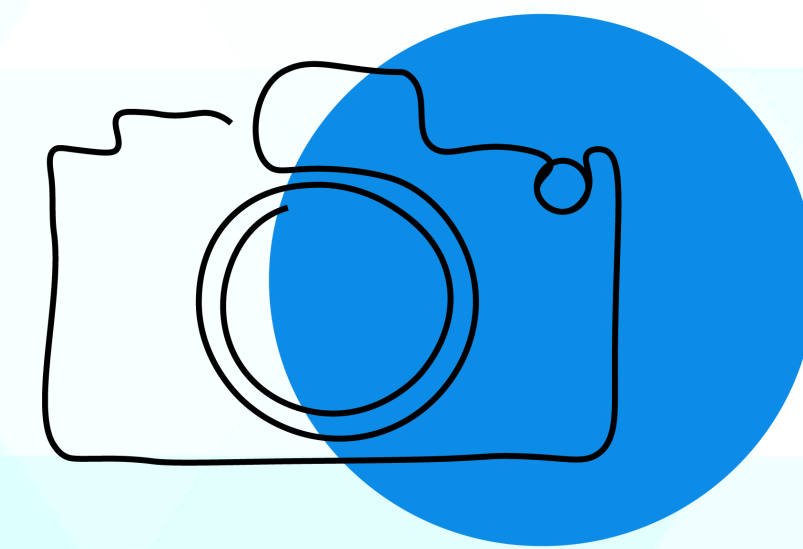


Wound Care



We have developed two versions of the Wound Care pathway for both care homes and district nurses. The care home Wound Care pathway is part of a wider package of care home solutions designed to support digital communication between health and care staff.

It allows care home staff to input basic details about the wound and upload photos. The district nursing Wound Care pathway asks more questions than the care home version, mimicking the existing wound assessment template and also allows photos to be added.

How it works

The two versions work in the same way. Once registered on the portal, the user is taken through a series of questions about the wound. In the district nurses case, this follows the existing wound assessment and review template. A shorter list of questions is on the care home version. There is the ability to mark on a body map where the area of concern is, and with consent, take photos of the wound. This can be used for any concerns regarding skin such as for pressure area assessments, rashes, or concerns about dressings. In both cases, the application allows up to four images to be taken. The images are not saved locally on the device. The data captured, including the photographs, is integrated into the patient's existing clinical record and can be viewed by appropriate healthcare professionals.

Product features

Care home

- Body map identification
- Questions on odour and pain
- Photo capability (in app, no photo stored on the device)
- Integrated with Electronic Patient Record

Community nursing

- Mimics wound assessment and review templates
- Able to schedule review assessments
- Photo capability (in app, no photo stored on the device)
- Integrated with Electronic Patient Record

Wound Care

Benefits

- Improved joint assessment with tissue viability teams
- Improved ability to triage referrals and ensure that nurses have the right dressings when visiting patients
- Reduced footfall to care homes
- Reduced duplication of work
- Reduced travel by clinicians
- Improved ability to communicate with other health care professionals such as GPs, tissue viability nurses, surgeons
- Supports rapid reviews
- Ensures appropriate dressing usage

Deployed at: care homes and community nursing team in County Durham and Darlington

